

White Paper: Applying Microsoft Patches with Task Scheduler Pro

Rev 2 – June 1, 2006

Lieberman Software Corporation
<http://www.liebsoft.com>

Abstract

This white paper provides step by step instructions to apply Microsoft patches with Lieberman Software's *Task Scheduler Pro*.

Contents

1. Applying Microsoft Patches with Task Scheduler Pro	3
2. Preparation Download Patches	3
3. Patching Your Systems with Task Scheduler Pro	3
4. Add Systems to Your Machine List	4
5. Organize Machines by Operating System Version	6
6. Create and Distribute Patch Task to a Group of Systems	7
7. Running Remote Patch Tasks	11

1. Applying Microsoft Patches with Task Scheduler Pro

The MSBlast worm, also called the RPC/DCOM vulnerability, requires that you install a specific version of the patch for each platform you are patching. Task Scheduler Pro allows enables you to copy the appropriate platform specific patch to each of your systems, execute the patch in an unattended manner, and reboot the systems remotely without any further action on your part.

Task Scheduler Pro allows administrators to deploy patches across their enterprise much faster than distribution systems like Microsoft SMS. Patch tasks can be created on all of your systems simultaneously, and they begin executing on your systems almost immediately. In a virus outbreak situation, speed is essential.

2. Preparation - Download Patches

First download the patches you will need from the Microsoft web site and store them in a common and convenient location on your local machine. Task Scheduler Pro will copy these files to your systems. The following section provides lists of file names and specific links to the Microsoft web site to download each patch. For the sake of easy installation, these should be all stored in a common location on your local workstation.

When this guide was written the current files were named as follows:

Windows NT 4.0 Server File Name: Q823980i.EXE

Windows NT 4.0 Terminal Server Edition File Name: Q823980i.EXE

Windows 2000 File Name: Windows2000-KB823980-x86-ENU.exe

Windows XP 32 bit Edition File Name: WindowsXP-KB823980-x86-ENU.exe

Windows XP 64 bit Edition File Name: WindowsXP-KB823980-ia64-ENU.exe

Windows Server 2003 32 bit Edition File Name: WindowsServer2003-KB823980-x86-ENU.exe

Windows Server 2003 64 bit Edition File Name: WindowsServer2003-KB823980-ia64-ENU.exe

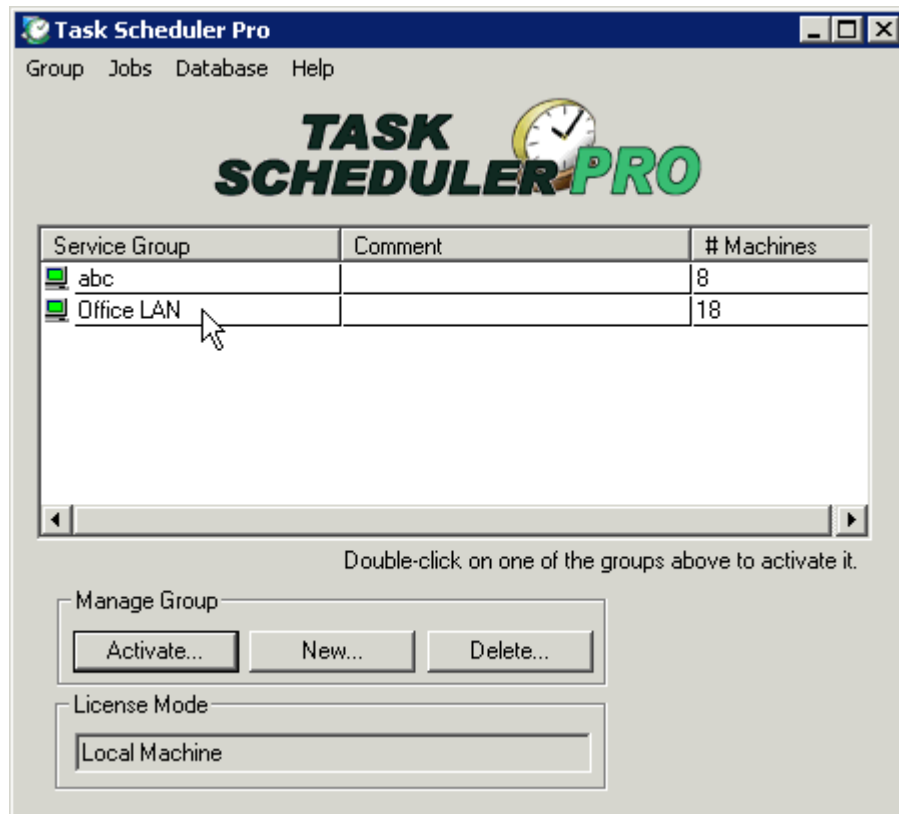
3. Patching Your Systems with Task Scheduler Pro

Start Task Scheduler Pro.



If you do not own Task Scheduler Pro you can download a free demo that allows you to manage 10 systems for 30 days (www.liebsoft.com). If you need additional time or systems for your evaluation, please contact our Sales Department (sales@liebsoft.com).

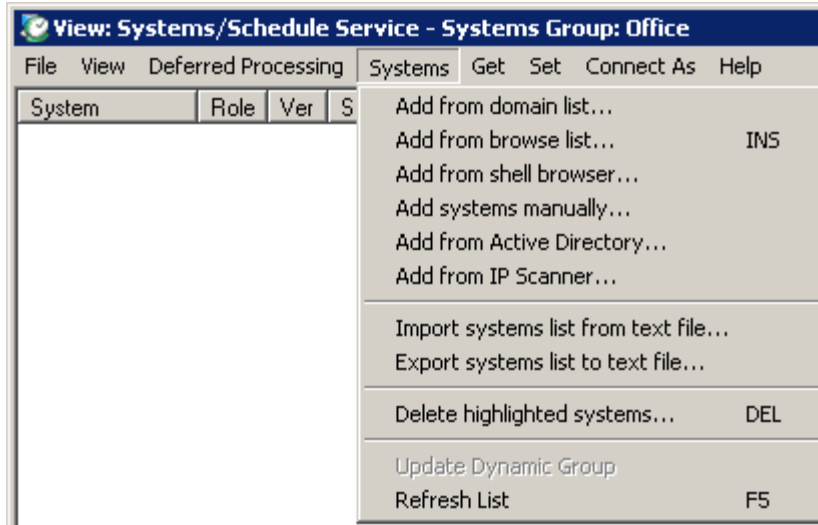
When the program starts running you will see the group management window. This window allows you to create a named group of systems to manage. If you already have systems in a group, just double-click on the group name. If you are just starting, click on the "New..." button and give your group of systems a name.



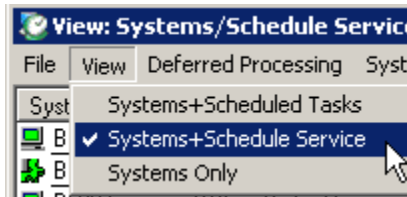
4. Add Systems to Your Machine List and Confirm that the Scheduler is Running on All Targets

You will need to tell Task Scheduler Pro the names of the machines you want to patch. You can create a list of machines by going to the "Systems" menu and using one of the different "Add" options.

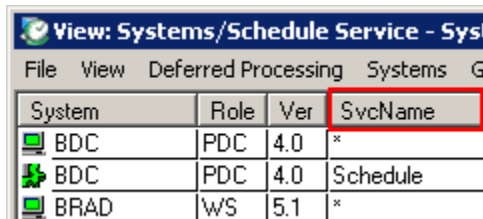
You can also import a list of machines previously exported by User Manager Pro.



In order to install remote tasks, the Task Scheduler service must be running on all of your target machines. To verify the running state of the services as well as your administrative rights to these machines, go to the "View" menu and select the "Systems+Schedule Service" menu option.



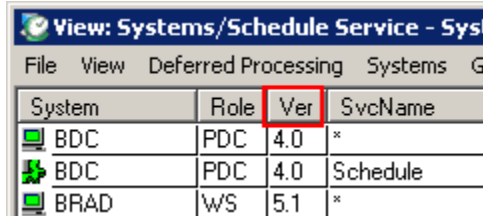
Perform a refresh on the service status on all of the systems by highlighting them and pressing the F5 key. The program will then refresh the state of each machine as well as the service status. To separate the different information (services and machine status), click on the "SvcName" column.



Make sure that the scheduler service is running (scroll down where the SvcName is not an asterisk (*) on all systems. If it is disabled, you can highlight the disabled services and use the right-click context menu to enable/start the services.

5. Organize Machines By Operating System Version

Sort the list of systems by operating system version. Click on the "Ver" column to perform the sort operation.

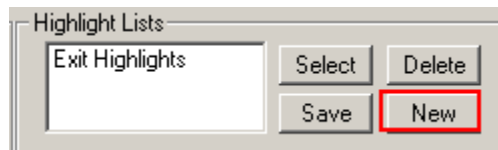


System	Role	Ver	SvcName
BDC	PDC	4.0	*
BDC	PDC	4.0	Schedule
BRAD	WS	5.1	*

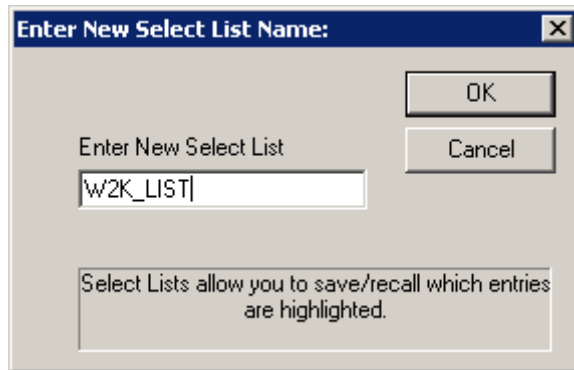
Version 4.0 is NT 4.0, 5.0 is Windows 2000, 5.1 is Windows XP, and 5.2 is Server 2003. Note that you will be creating different tasks for different versions of the operating system and then running them remotely.

System	Role	Ver	SvcName	D
INTEL133	BDC	3.51	*	*
BDC	PDC	4.0	*	*
E1000	PDC	5.0	*	*
IWILL233	SRV	5.0	*	*
IWILL600	PDC	5.0	*	*
JOTHAM	SRV	5.0	*	*
LIEBOFFICE...	SRV	5.0	*	*
BRAD	WS	5.1	*	*

We will be using the "Highlight Lists" feature of Task Scheduler Pro. This feature allows us to memorize highlighted groups of entries. Make sure you highlight all of the systems (systems have asterisks in the service field for machines) of each operating system version as a set and use the "New" button to save the set under an appropriate name (i.e. NT_LIST for 4.0 systems, W2K_LIST for 5.0 systems, and so on).



In this example you will save the list of Windows 2000 systems by entering the new name and clicking on the "OK" button.

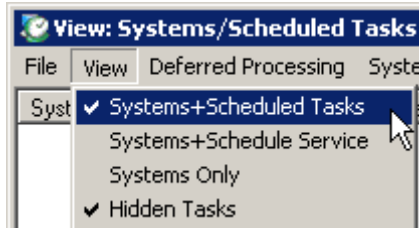


For the sake of convenience you should select the highlight "None" button and then create different "Highlight Lists" for all of the different operating system versions in your environment. Below are the highlighted entries for the XP_LIST:

System	Role	Ver	SvcName
JOTHAM	SRV	5.0	*
LIEBOFFICE...	SRV	5.0	*
BRAD	WS	5.1	*
DKADMIN	WS	5.1	*
JAMEY2	WS	5.1	*
KATT	WS	5.1	*
LAURA	WS	5.1	*
LINDA	WS	5.1	*
LORI	WS	5.1	*
NICK	WS	5.1	*
PAT	WS	5.1	*
RANDY	WS	5.1	*
SALES01	WS	5.1	*

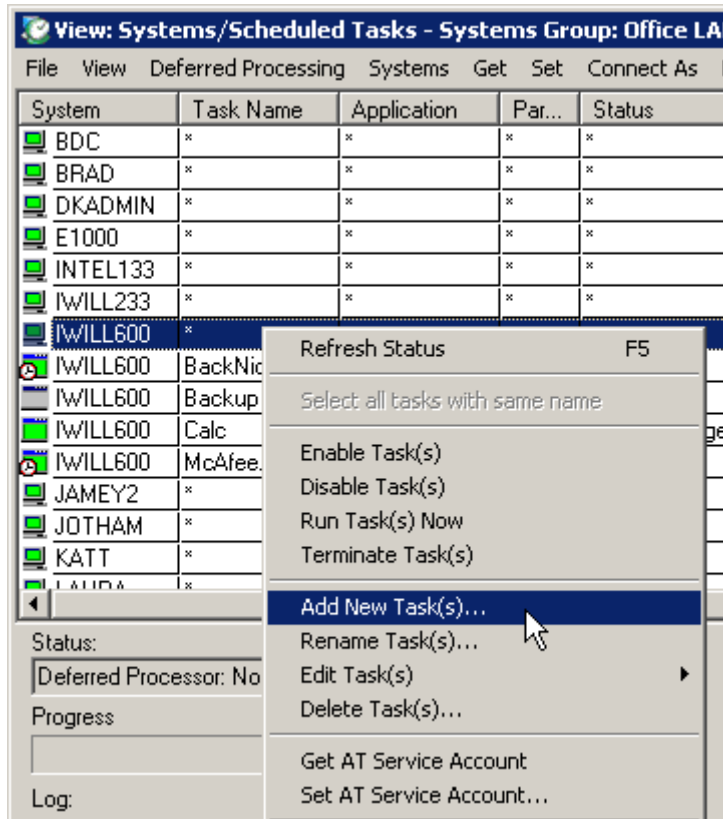
6. Create & Distribute Patch Task to a Group of Systems

Switch to the Tasks view by clicking on the menu option: "View" | "Systems+Scheduled Tasks".

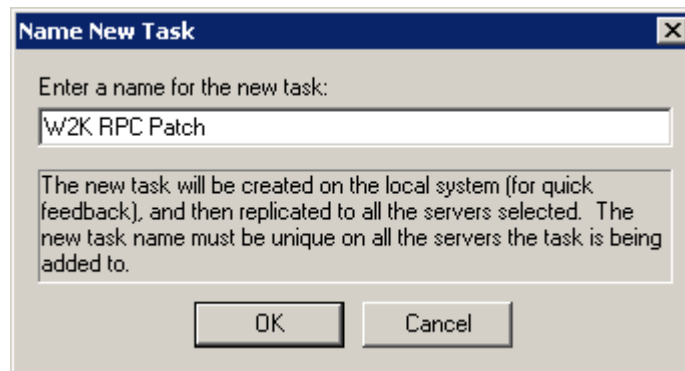


Decide which patch you want to do first. In this example we will do Windows 2000 systems. Double-click on the "W2K_LIST" highlight list to highlight all of the Windows 2000 systems.

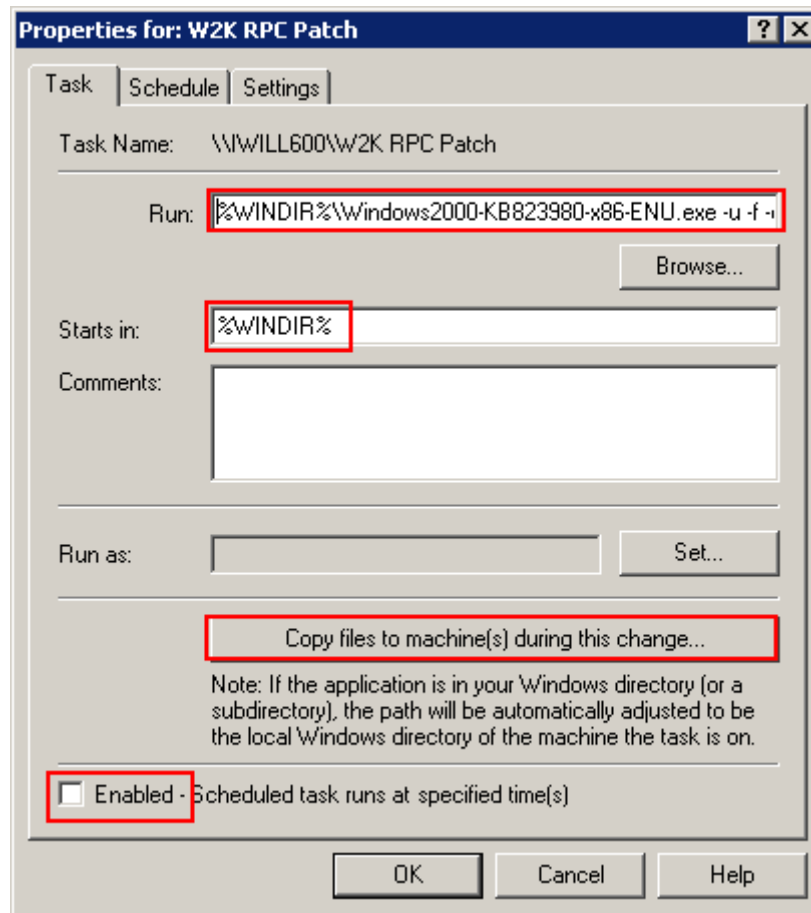
Right-click on one of the highlighted entries and select the "Add New Task(s)..." option:



Enter the name of the patch being distributed to all of the machines. We are using the "W2K RPC Patch".



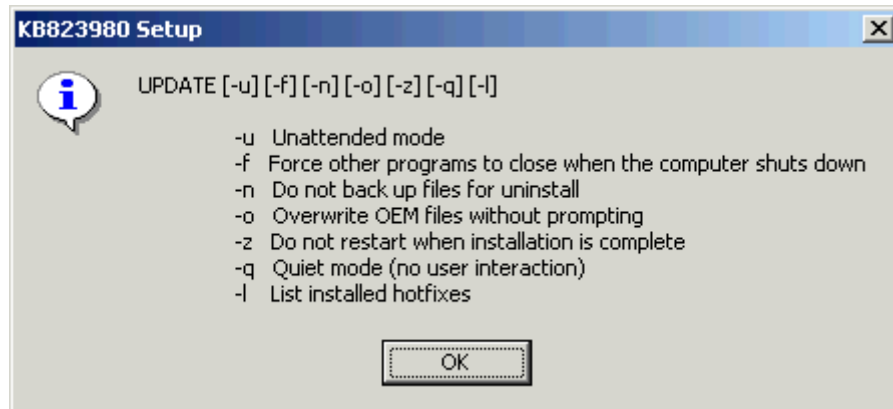
Set the "Run" field with the program name with path and command lines.



We set the "Run" string to:

```
"%WINDIR%\Windows2000-KB823980-x86-ENU.exe -u -f -o -q -n"
```

The command line arguments are based on the options available for updates. Depending on your circumstances you may want to select different command line options.

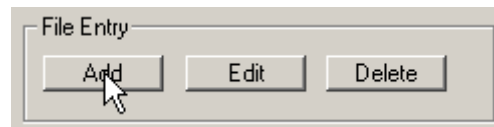


Set the "Starts in" field to "%WINDIR%".

Set the "Enabled" checkbox (at the bottom of the dialog) to unchecked. You will be starting the task manually a little bit later.

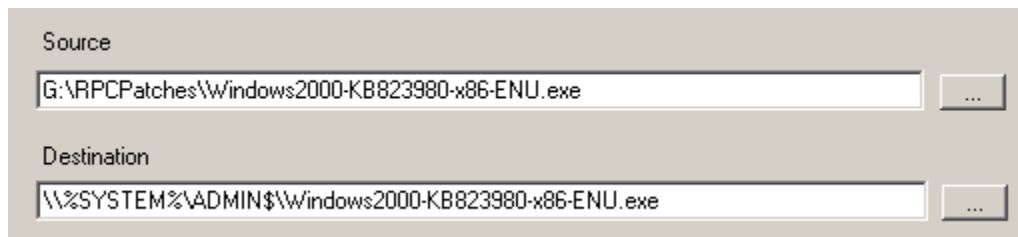
Click on the "Copy files to machine(s) during this change" button. We can copy the patch file(s) to the remote machine as part of the task creation process.

Click on the "Add" button to specify the file transfer parameters.

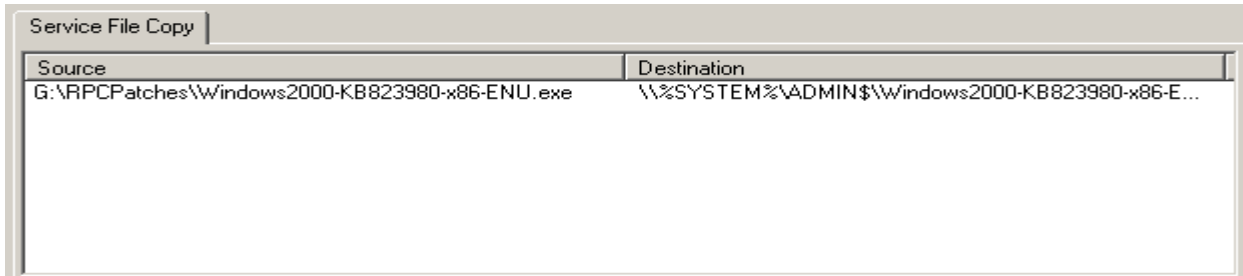


Use the top ellipse ("...") button to set the path to the patch file on your local machine. For the destination, use:

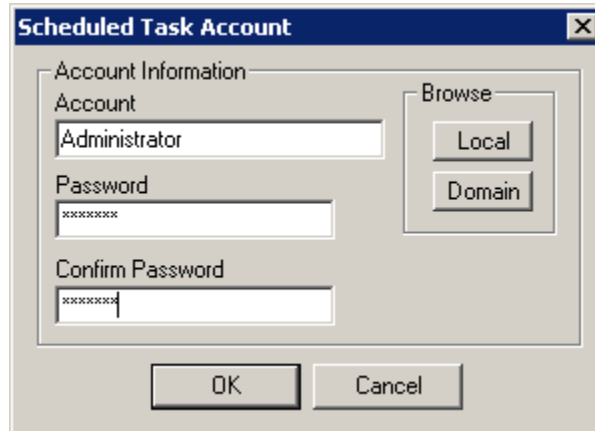
`\\%SYSTEM%\ADMIN$\YourPatchFileName`



When you view the file list you should see the fixed source path and the variable destination path. Note that the file name at the end of both paths (source and destination) must be identical.



Click on the "OK" button to launch the creation process. As part of the task creation, you will be asked to provide credentials for the new tasks. The credentials provided must be seen as an administrator on each local machine.



7. Running Remote Patch Tasks

Double-click on the highlight list name for your group of systems. Right-click and select the "Run Tasks Now".

After a few moments, you should get a confirmation in the Status that the task is running on all of your machines. Your patches are now running. You should give them about 10 minutes to complete.

Our support staff is available to answer your technical questions whether you are a customer or not.

Voice: 800.829.6263 (USA/Canada) Voice: (01) 310.550.8575 (Worldwide) Fax: (01) 310.550.1152 (Worldwide)
Web: www.liebsoft.com Email: support@liebsoft.com

